



BRUBAY SHIPCARE SDN BHD

Lot 4, Block A, Shermadef Commercial Centre, 1.5KM Jalan Patau-Patau,
87018, FT Labuan, Malaysia. Tel: 6087-581126 Fax: 6087-583126 Email:
fred@brubay.com

VESSEL PARTICULARS

Vessel Name : **MERMAID EXPLORER**
 Port of Registry : Sandakan
 Registration No : SSK00600K
 Official No: :
 Year Built : 2015
 Type : Steel Landing Craft
 Classification : Boat License
 Flag : Malaysia

PRINCIPAL DIMENSION

Length Overall : 32M
 Length of Maindeck : 30M
 Breadth Moulded : 7.3M
 Depth Moulded : 2.4M
 GRT : 150MT
 NRT : 45 MT

PERFORMANCE

Speed : ±8 Knot

MACHINERY & AUXILLARY MACHINERY

Main Engines : **Weichai WP12C400-18**
 : 400HP 295kW 1800 RPM
 : 2 units
 Dimensions : 1695L x 860W x 1385H MM
 Fuel Oil Consumption : 136L/Hr (Max) 2 engines
 Gear Box : "Advance" WHG-300, 4:1
 : 786mmL x 930mmW x 86mmH
 : 2 units
 Propulsion : 2 X Propeller, 46" x46" x 4 blade
Generator - 1 : **Weichai WP4CD66E201**
 100kW 440V 60Hz 3-Phase
 : 1500L*800D*1200mmH
 : Switchable to 50Hz
 Fuel Oil Consumption : 11L/Hr (Maximum)
Generator - 2 : **Weichai D226B-3CD1**
 : 30kW 440V 3 Phase 50/60Hz switchable

CAPACITIES

Clear Deck Space : 120 M2 (20L x 6W)M
 5 units 20ft container capacity
 Max. Deck Cargo Cap : 80 Tons
 (if cargo tanks empty)
 FO Tank P+S : 19,200 Litres
 Fresh Water Tank : 30,960 Litres
 Cargo Tank 1 (P, S) : 40,000 Litres
 Cargo Tank 2 (P, S) : 70,000 Litres
 Cargo Tank 3 (P, S) : 70,000 Litres
 Cargo Tank 4 (P, S) : 70,000 Litres
 Total Liquid Cargo : 250,000 Litres

ACCOMODATION

Berth : 2 x 1 Berth Cabin = 2 men
 : 1 x 6 Berth Cabin = 6 men
 : 1 x 2 Berth Cabin = 2 men

Total : 10 men

NAVIGATIONAL / COMMUNICATION

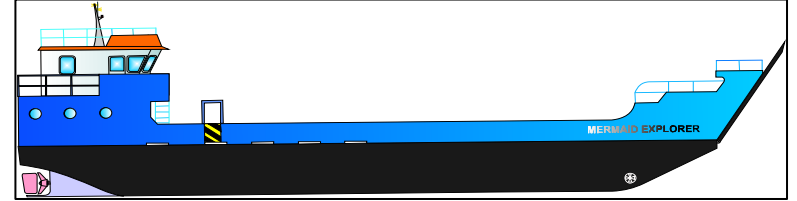
Walkie Talkie : 4 units
 VHF Radio fixed : 1 unit
 Furuno GPS GP1870S : 1 unit
 with echo sounder
 Magnetic Compass : 1 unit

PUMP CAPACITY

Pump : Self Priming
 : Flow Rate - 120M3 / Hr
 : Head - 91M
 : Suction - 06M
 Electric Motor : 440V 60Hz 3Phase
 : 37kW @3500 RPM

BOW THRUSTER

Jet Drive 200HP Motor
 45kW 440V 60Hz 3 phase



ANCHORING SYSTEM

Bow Anchor : 2 x 250 kg Stockless Anchor
 Anchor Chains : 2 x19mm diameter common
 stud chain 5 shackles each
 Anchor Windlass / : 2 x 3 tons Electro Hydraulic
 Ramp Door Winch : 1100L x 1080D x 1175H (MM)

LIFE SAVING APPLIANCES

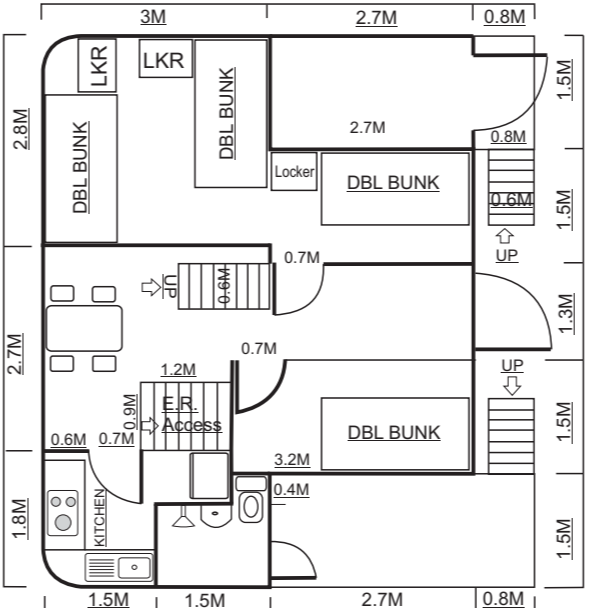
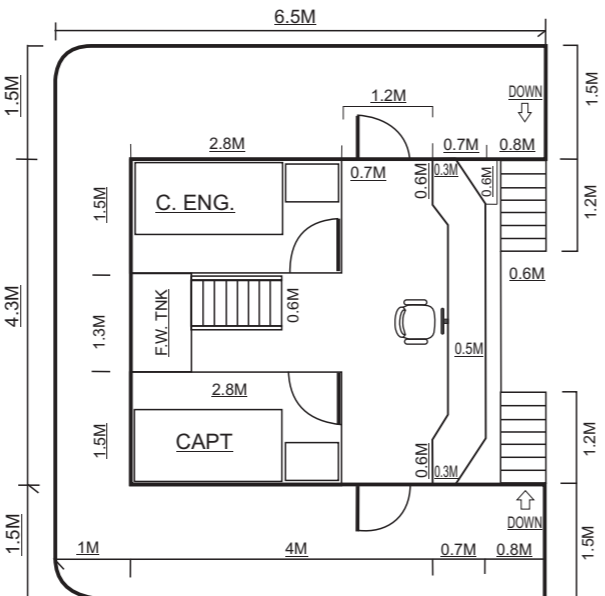
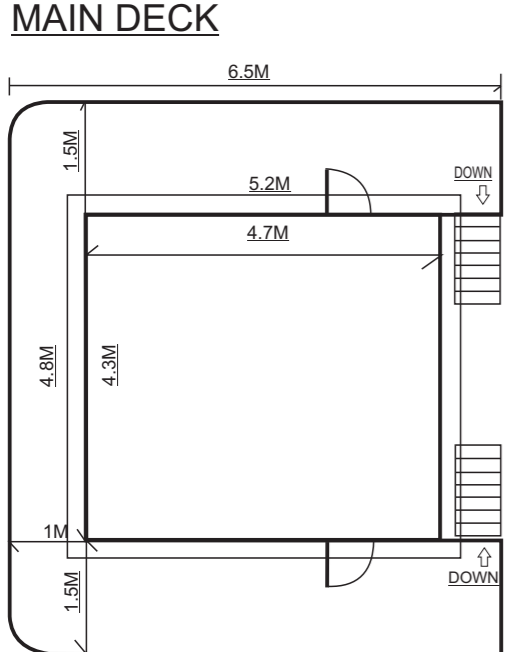
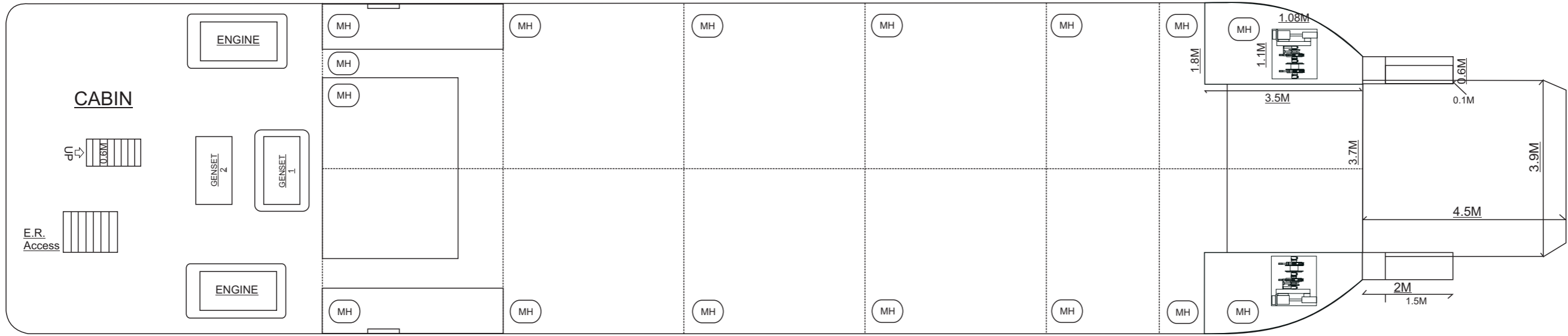
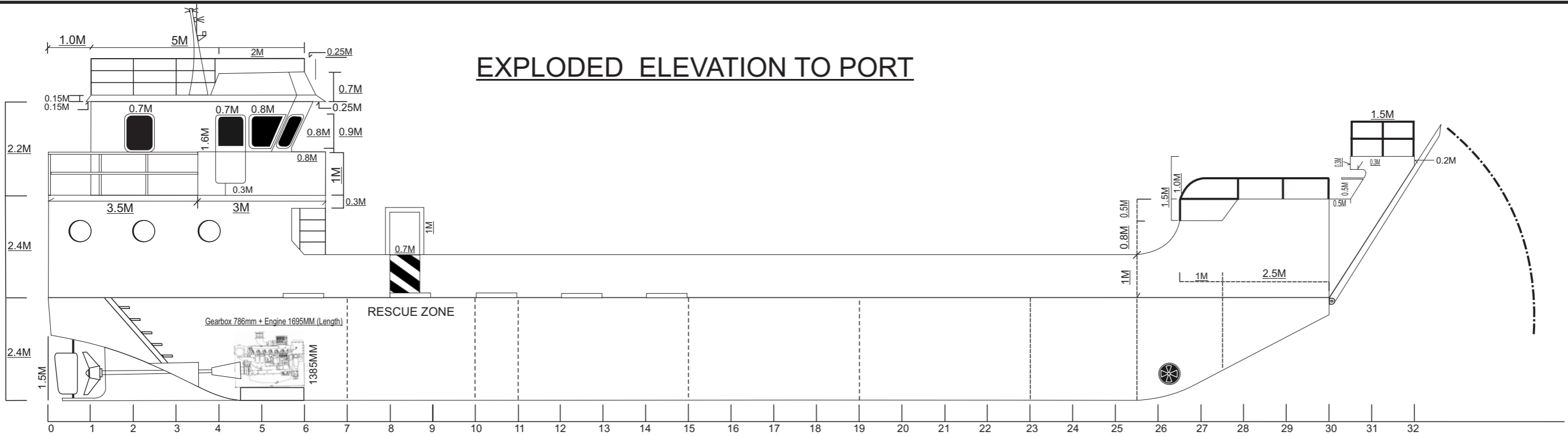
Liferaft : 1 x 10 men
 Life Buoy : 8 pcs
 Life Jacket : 12 pcs
 Search Light : 1 unit x AC 1000w
 : 2 units x DC Power

Others

Ventilation Fan : 2 units
 Bilge Pump : 2 units
 Fire Pump : 1 unit
 Navigation Light : 1 set
 Anchor Light : 1 unit
 Cabin Light : 1 set
 First Aid Kit : 1 pc



EXPLODED ELEVATION TO PORT



PRINCIPAL PARTICULARS	
L.O.A.	32M
LENGTH OF MAIN DECK	30M
BEAM (MOULDED)	7.3M
DEPTH (MOULDED)	2.4M
MAIN ENGINES	WEICHAI WP12C400-18 X 2 NOS 400 HP (298kW) @ 1800 RPM

BRUBAY SHIPCARE SDN BHD		
LOT 4, BLOCK A, SHERMADEF COMMERCIAL CENTRE, 1.5KM JALAN PATAU-PATAU 87018, W.P. LABUAN		
GENERAL ARRANGEMENT		
DRAWN BY: FRED CHOO	LCT 32M	
DATE:	SCALE - 1:100	Sheet 2 of 2